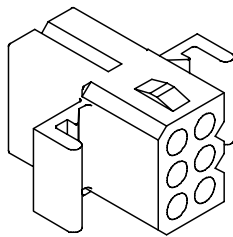
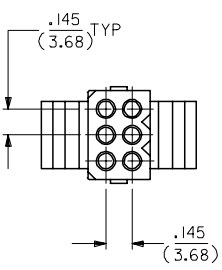
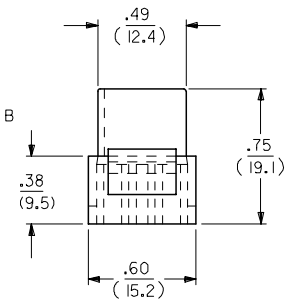
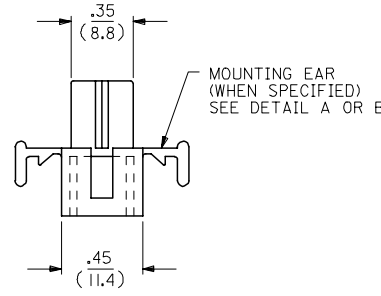
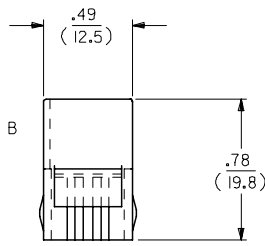
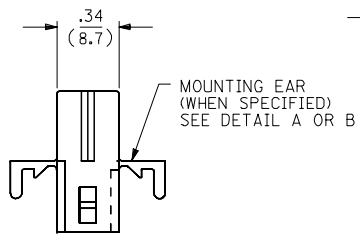
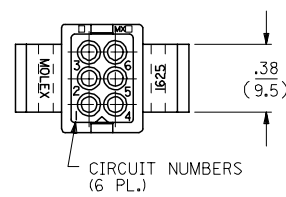
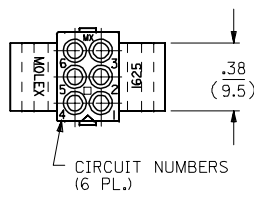


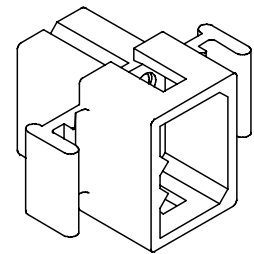
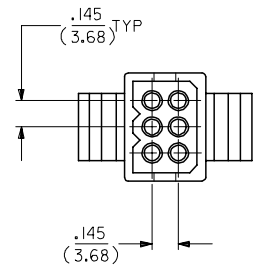
13 12 11 10 9 8 7 6 5 4 3 2 1

RECEPTACLE

PLUG



SHOWN WITH STANDARD EAR



SHOWN WITH STANDARD EAR

UPDATE TITLE BLOCK FC NO: UCP2006-1431 DRAWN: AELHAG 2006/08/29 CHKD: LSJHMT 2006/08/29 APPR: FSM TH 2006/08/30	QUALITY SYMBOLS ▽=0 ▽=0	GENERAL TOLERANCES (UNLESS SPECIFIED)		DIMENSION STYLE		SCALE	DESIGN UNITS	THIRD ANGLE PROJECTION	
			mm	INCH	IN/MM	---	INCH		
		4 PLACES	± .010	± .010	DRAWN BY	DATE	TITLE		
		3 PLACES	± .010	± .010	KBW	7/22/88	.062/(1.57) HOUSING PLUG & RECEPTACLE 6 CKT, .145/(3.68) C.L.		
2 PLACES	± 0.25	± .014	CHECKED BY	DATE					
1 PLACE	± 0.35	± .014	RW	7/22/88	moLEX MOLEX INCORPORATED				
ANGULAR ±1/2°			APPROVED BY	DATE					
DRAFT WHERE APPLICABLE MUST REMAIN WITHIN DIMENSIONS		SEE CHART		MATERIAL NO.		DOCUMENT NO.	SHEET NO.		
				SD-1625-6*		1 OF 2			
THIS DRAWING CONTAINS INFORMATION THAT IS PROPRIETARY TO MOLEX INCORPORATED AND SHOULD NOT BE USED WITHOUT WRITTEN PERMISSION									

12 11 10 9 8 7 6 5 4 3 2 1

13 12 11 10 9 8 7 6 5 4 3 2 1

PLUG		
ORDER NO	ENG NO	
03-06-2062	I625-6P	
03-06-2061	I625-6P1	
03-06-7062	I625-6PBK	
03-06-7061	I625-6P1BK	
03-06-7063	I625-6POR	OBSOLETE
-	-	

**LEGEND:**

I625-6\*\*\*\*

CIRCUIT SIZE

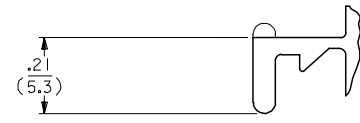
P = PLUG  
R = RECEPTACLE

BLANK = WITH STANDARD EARS  
1 = WITHOUT EARS  
2 = WITH PREBENT EARS

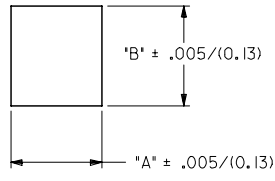
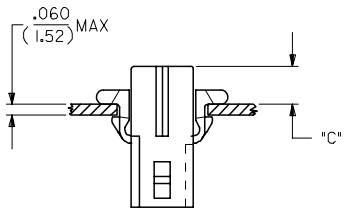
COLOR: \_\_\_\_\_

BLANK = NATURAL COLOR  
AM = AMBER BK = BLACK BU = BLUE  
BN = BROWN GY = GRAY GN = GREEN  
OR = ORANGE RD = RED YW = YELLOW

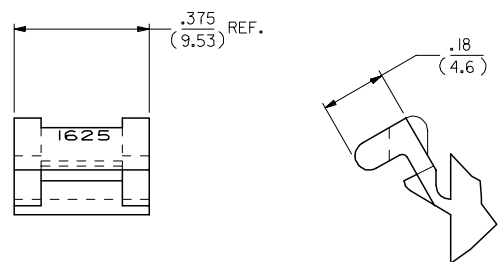
RECEPTACLE		
ORDER NO	ENG NO	
03-06-1061	I625-6R	
03-06-1062	I625-6R1	
03-06-6061	I625-6RBK	
03-06-6062	I625-6R1BK	
03-06-6063	I625-6R0R	OBSOLETE
03-06-6064	I625-6RBU	
NOT TOOLED	I625-6R2	



**DETAIL A**  
.062/(1.57) STANDARD MOUNTING EAR  
(SCALE 4:1)



HOUSING	DIM. "A"	DIM. "B"	"C" PREBENT EAR	"C" STANDARD EAR
PLUG	.607/(15.42)	.615/(15.62)	.22/(5.6)	.18/(4.6)
RECEPT.	.505/(12.83)	.552/(14.02)	.23/(5.8)	.19/(4.8)



**DETAIL B**  
.062/(1.57) PREBENT MOUNTING EAR  
(SCALE 4:1)

- NOTES:-
1. MATERIAL NYLON TYPE 6/6, 94-2.
  2. FINISH: NONE.
  3. PRODUCT SPECS: MOLEX PRODUCT SPECS 02-06 APPLIES.
  4. PACKAGING SPECS: BULK PACK PER PK-1625-001.

<b>REINSTATE PARTS</b> FC NO: UCP2006-1431 DRWNAELHAG 2006/08/29 CHKD:LSHMDT 2006/08/29 APPR:FSMTH 2006/08/30 J1	QUALITY SYMBOLS ▽=0 ▽=0	GENERAL TOLERANCES (UNLESS SPECIFIED)		DIMENSION STYLE IN/MM		SCALE ---	DESIGN UNITS INCH	THIRD ANGLE PROJECTION			
		4 PLACES ± --- ± ---	3 PLACES ± --- ± .010	2 PLACES ± 0.25 ± .014	1 PLACE ± 0.35 ± ---	DRAWN BY KBW	DATE 7/22/88	TITLE .062 / (1.57) HOUSINGS PLUG & RECEPTACLE 6 CKT, .145/(3.683) C.L.			
		ANGULAR ±1/2°				CHECKED BY RW	DATE 7/22/88	MATERIAL NO. RAS			
		DRAFT WHERE APPLICABLE MUST REMAIN WITHIN DIMENSIONS				APPROVED BY RAS	DATE 7/22/88	MOLEX INCORPORATED		SHEET NO. 2 OF 2	

SEE CHART

THIS DRAWING CONTAINS INFORMATION THAT IS PROPRIETARY TO MOLEX INCORPORATED AND SHOULD NOT BE USED WITHOUT WRITTEN PERMISSION

12 11 10 9 8 7 6 5 4 3 2 1